



TRANSFORMATIVE DESIGNS FOR SUSTAINABILITY

CANVAS
AND QUESTIONS

Transformative Designs for Sustainability

Facilitating mindshifts for collective
action and Anthropocene prosperity

This Symposium is a cooperation between:



VolkswagenStiftung



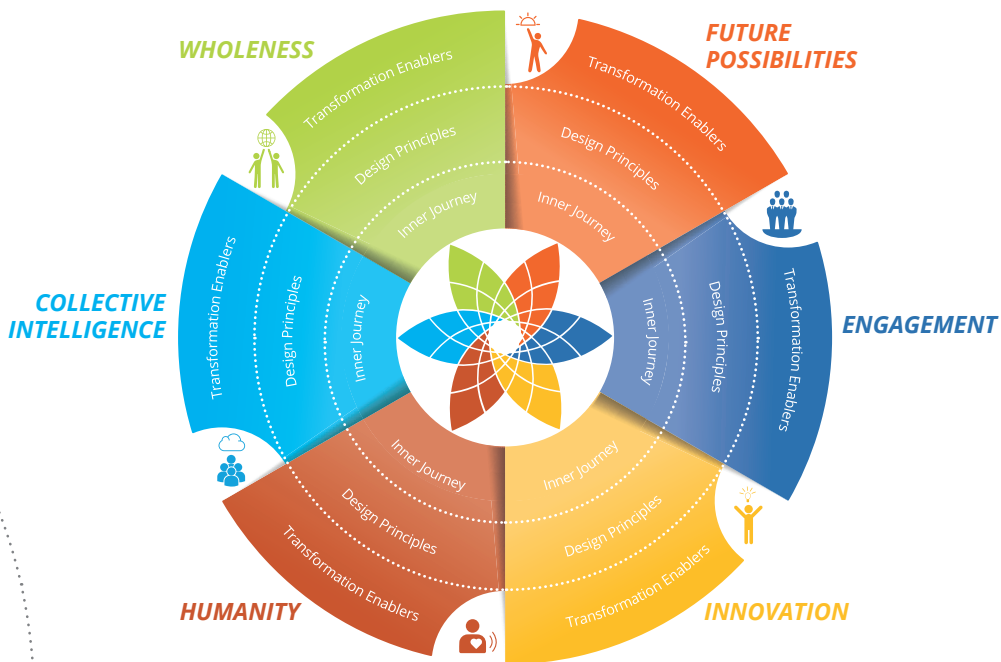
COLLECTIVE
LEADERSHIP
INSTITUTE



June 18-20, 2018

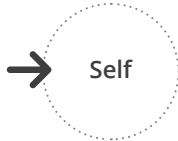
Herrenhausen Palace, Hannover, Germany

THE CANVAS



A conceptual architecture for
stewarding systems aliveness

THE APPROACH



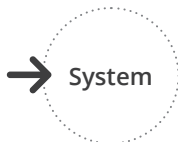
INNER JOURNEY:

» How can we approach our inner journey to transformation?



TRANSFORMATIVE DESIGN PRINCIPLE:

» What are the most effective ways to design transformative change processes?



TRANSFORMATION ENABLER:

» Which systems interventions support transformative change?



FUTURE POSSIBILITIES

INNER JOURNEY:

INTENTION AND GENERATIVITY

- » Invigorating the human capability to collectively shape the future



TRANSFORMATIVE DESIGN PRINCIPLE:

FUTURE POSSIBILITIES

- » Identifying and co-developing emotionally compelling goals
- » Co-developing strategies and implementation plans



TRANSFORMATION ENABLER:

ENLIVENING NARRATIVES

- » Envisioning thriving socio-ecological systems
- » Driving the change of mindsets and envisioning a sustainable future
- » Crafting collective stories of possibilities



Notes

.....

.....

.....

.....

.....

.....

.....

.....

.....

.....

.....

.....

.....

.....

.....





FUTURE POSSIBILITIES

CANVAS QUESTIONS

INNER JOURNEY:

- » When do I/we engage with others to shape the future collectively?



Self



TRANSFORMATIVE DESIGN PRINCIPLE:

- » How do we enhance future orientation and co-develop goals?



Process



TRANSFORMATION ENABLER:

- » What are **enlivening narratives** that will inspire many actors to shape the sustainable future collectively?



System



Notes

.....

.....

.....

.....

.....

.....

.....

.....

.....

.....

.....

.....

.....

.....





ENGAGEMENT

INNER JOURNEY:

CONTAINMENT

- » Appreciating the need for belonging and meaningful relationships



TRANSFORMATIVE DESIGN PRINCIPLE:

ENGAGEMENT

- » A step-by-step trust-building process of engaging relevant stakeholders
- » Establishing structures for collective action and joint implementation



TRANSFORMATION ENABLER:

ENABLING STRUCTURES

- » Forms of organizations, institutional multiplicity as well as societal structures that enable collaboration and widespread ownership for sustainability transformation



Notes

.....

.....

.....

.....

.....

.....

.....

.....

.....

.....

.....

.....

.....

.....

.....





ENGAGEMENT

CANVAS QUESTIONS

INNER JOURNEY:

- » When do I/we feel a sense of belonging?



Self

TRANSFORMATIVE DESIGN PRINCIPLE:

- » How do we engage all relevant stakeholders and foster collective action?



Process

TRANSFORMATION ENABLER:

- » How do we empower change networks and **enabling** collaboration **structures**?



System



Notes

.....

.....

.....

.....

.....

.....

.....

.....

.....

.....

.....

.....

.....

.....

.....





INNOVATION

INNER JOURNEY:

NOVELTY AND EMERGENCE

- » Engaging the human desire to invent new pathways



TRANSFORMATIVE DESIGN PRINCIPLE:

INNOVATION

- » Fostering space for creativity and innovation
- » Engaging the Youth and neglected voices
- » Opening avenues for finding innovative approaches.



TRANSFORMATION ENABLER:

SUSTAINABILITY-ORIENTED INNOVATION

- » Incentivizing and nurturing spaces for sustainability related innovation
- » Developing prototypes for transformation
- » Creating support systems for social and technological innovation.



Notes

.....

.....

.....

.....

.....

.....

.....

.....

.....

.....

.....

.....

.....





INNOVATION

CANVAS QUESTIONS

INNER JOURNEY:

- » What makes me/us creative and inventive? What makes me/us pursue mastery?



Self

TRANSFORMATIVE DESIGN PRINCIPLE:

- » How do we design spaces for creative solutions and bring new ideas together?



Process

TRANSFORMATION ENABLER:

- » How do we value pioneering practices and incentivize sustainability-oriented innovations?



System



Notes

.....

.....

.....

.....

.....

.....

.....

.....

.....

.....

.....

.....

.....

.....

.....





HUMANITY

INNER JOURNEY:

MINDFULNESS AND EMPATHY

- » Raising the human capability for reflection in action
- » Reaching out to the humanness in the other



TRANSFORMATIVE DESIGN PRINCIPLE:

HUMANITY

- » Fostering collective reflection,
- » Creating peer reviews and feedback systems
- » Establishing mindfulness practices and cultivating mutual understanding



TRANSFORMATION ENABLER:

EMPOWERING METRIC

- » Establishing holistic sustainability metrics
- » Developing participatory bottom-up measurements of progress
- » Raising awareness through metrics



Notes

.....

.....

.....

.....

.....

.....

.....

.....

.....

.....

.....

.....

.....

.....

.....





HUMANITY

CANVAS QUESTIONS

INNER JOURNEY:

- » How do I/we personally balance action and reflection?
How do I deal with differences?



Self

TRANSFORMATIVE DESIGN PRINCIPLE:

- » How do we foster mutual understanding and collective reflection?



Process

TRANSFORMATION ENABLER:

- » How do we co-develop **empowering metrics** of sustainability progress?



System



Notes

.....

.....

.....

.....

.....

.....

.....

.....

.....

.....

.....

.....

.....

.....

.....





COLLECTIVE INTELLIGENCE

INNER JOURNEY:

INTERCONNECTEDNESS

- » Leveraging the human capability to connect with people and act in networks of networks in dialogue

→ Self

TRANSFORMATIVE DESIGN PRINCIPLE:

COLLECTIVE INTELLIGENCE

- » Establishing collective learning systems at scale
- » Ensuring structured dialogue processes
- » Engaging different stakeholders and multiple perspectives

→ Process

TRANSFORMATION ENABLER:

MULTI-LEVEL, MULTI-ISSUE, MULTI-STAKEHOLDER GOVERNANCE

- » Creating multi-level governance systems
- » Establishing stakeholder dialogues and innovative governance
- » Fostering multi-stakeholder collaboration and partnerships

→ System

Notes

.....

.....

.....

.....

.....

.....

.....

.....

.....

.....

.....

.....

.....

.....

.....





**COLLECTIVE
INTELLIGENCE**

CANVAS QUESTIONS

INNER JOURNEY:

- » What makes me/us connect with people and enter into good conversations?



Self

TRANSFORMATIVE DESIGN PRINCIPLE:

- » How do we establish structured dialogue and foster collective learning?



Process

TRANSFORMATION ENABLER:

- » Which forms of **governance** do we need to leverage multiple expertise and ensure ownership?



System



Notes

.....

.....

.....

.....

.....

.....

.....

.....

.....

.....

.....

.....

.....

.....

.....





WHOLENESS

INNER JOURNEY:

CONTRIBUTION AND MUTUAL ENHANCEMENT

- » Enhancing the human capability for mutual support
- » Fostering the connection with the larger picture



TRANSFORMATIVE DESIGN PRINCIPLE:

WHOLENESS

- » Fostering systems leadership and connecting with the larger transformation system
- » Creating contextual impact and harvesting opportunities for complementary meta-collaboration.



TRANSFORMATION ENABLER:

GUIDING REGULATIONS AND RESOURCE ALLOCATIONS

- » Co-developing or strengthening voluntary and binding guiding regulations
- » Adjusting laws, policies, procedures
- » Introducing sustainability-oriented resource flows



Notes

.....

.....

.....

.....

.....

.....

.....

.....

.....

.....

.....

.....

.....

.....

.....





WHOLENESS

CANVAS QUESTIONS

INNER JOURNEY:

- » What makes me/us want to contribute to something bigger?



Self

TRANSFORMATIVE DESIGN PRINCIPLE:

- » How to we embed our transformation strategy/strategic initiative in the larger context?



Process

TRANSFORMATION ENABLER:

- » Which **guiding regulations and resource allocations** will support and drive change?



System



Notes

.....

.....

.....

.....

.....

.....

.....

.....

.....

.....

.....

.....

.....

.....

.....



Notes

.....

.....

.....

.....

.....

.....

.....

.....

.....

.....

.....

.....

.....



Notes

.....

.....

.....

.....

.....

.....

.....

.....

.....

.....

.....

.....

.....

.....



Notes

.....

.....

.....

.....

.....

.....

.....

.....

.....

.....

.....

.....

.....



Notes

.....

.....

.....

.....

.....

.....

.....

.....

.....

.....

.....

.....

.....

.....

.....



COLLECTIVE LEADERSHIP COMPASS

The Canvas is inspired by The Collective Leadership Compass developed by Dr. Petra Kuenkel from the Collective Leadership Institute gGmbH.



